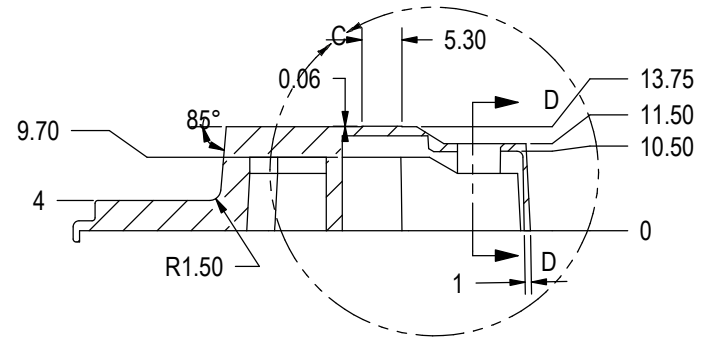
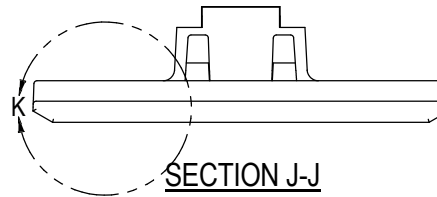


SECTION H-H

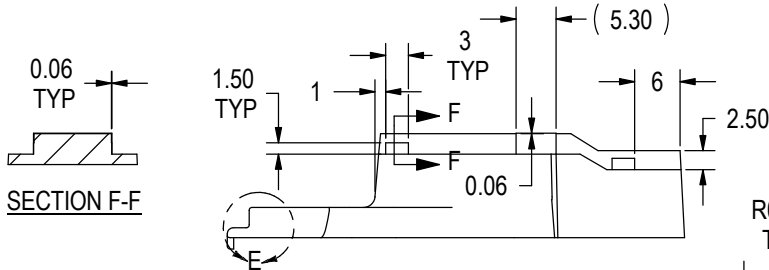


SECTION A-A

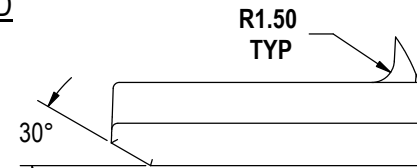


SECTION J-J

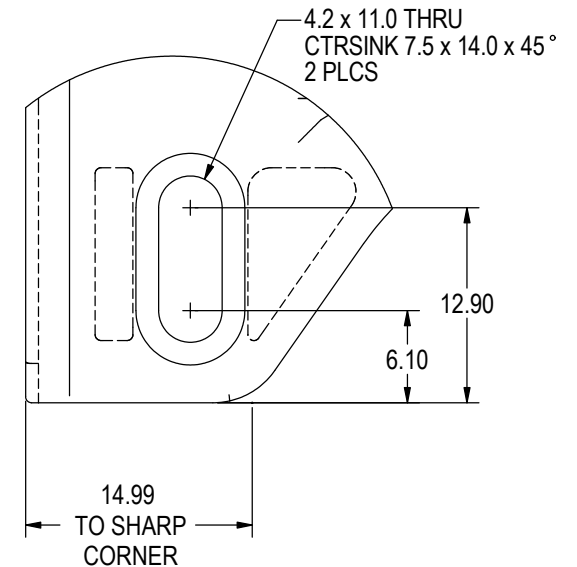
SECTION D-D



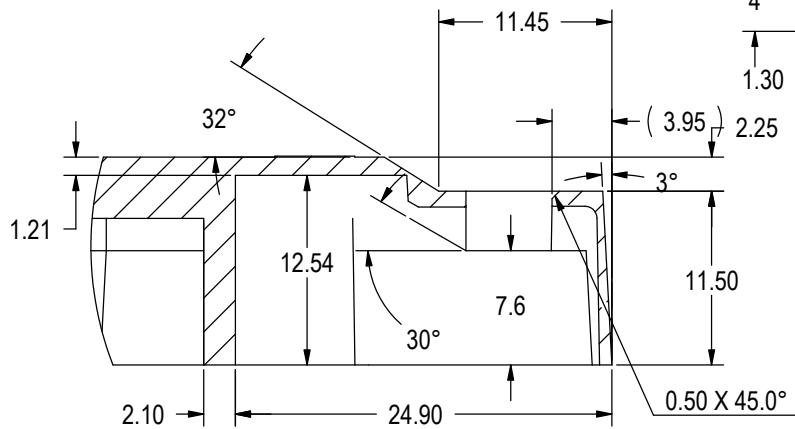
SECTION F-F



**DETAIL K
SCALE 2:1**



**DETAIL B
SCALE 2:1**



**DETAIL C
SCALE 2:1**

**DETAIL E
SCALE 2:1**

DRAWN BY: D. JOHNSON
SCALE: 1:1
DATE: 04/28/04

TOLERANCES

UNLESS OTHERWISE SPECIFIED
DIMENSIONS AND TOLERANCING
ARE IN MILLIMETERS (INCHES)

.X ±.1
.XX ±.03
.XXX ±.005

SHT NO.
1 OF 2

HARDWARE RESOURCES

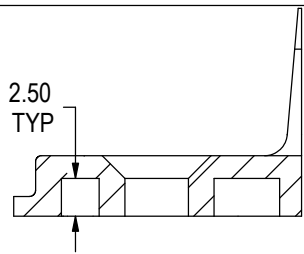
4319 MARLENA ST, BOSSIER CITY, LA 71111

PART NAME: 6mm FACE FRAME M PLATE

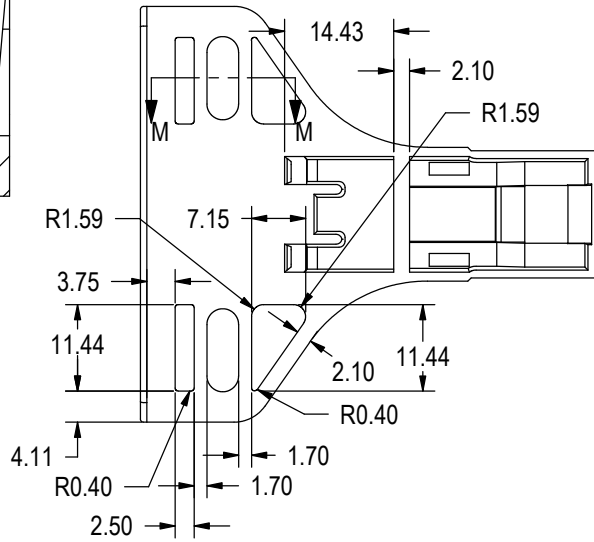
MATERIAL: ZINC

ITEM NO: 400.3715.65

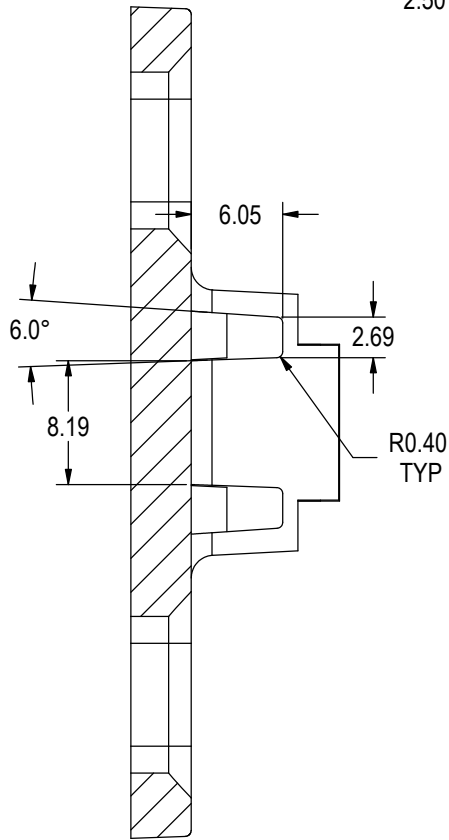
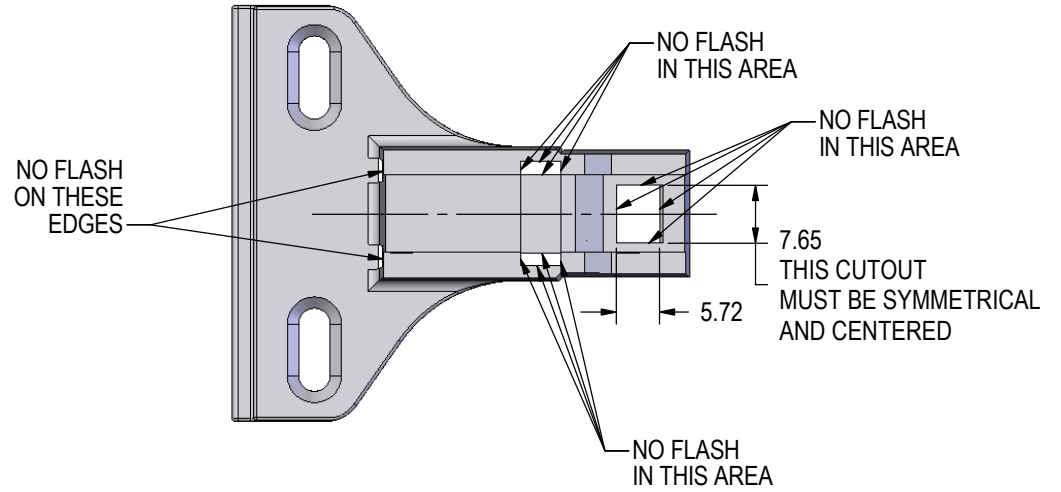
PLATING:



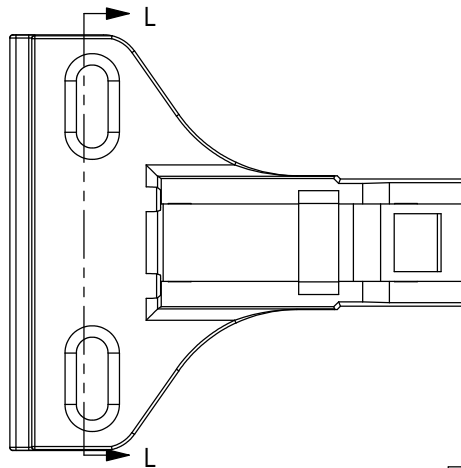
SECTION M-M
SCALE 2:1



BOTTOM VIEW



SECTION L-L
SCALE 2:1



DRAWN BY: D. JOHNSON	SCALE: 1:1	DATE: 04/28/04
-------------------------	---------------	-------------------

TOLERANCES

UNLESS OTHERWISE SPECIFIED
DIMENSIONS AND TOLERANCING
ARE IN MILLIMETERS (INCHES)

.X ±.1
.XX ±.03
.XXX ±.005

SHT NO.
2 OF 2

HARDWARE RESOURCES

4319 MARLENA ST, BOSSIER CITY, LA 71111

PART NAME: 6mm FACE FRAME M PLATE

MATERIAL: ZINC

ITEM NO: 400.3555.65

PLATING: